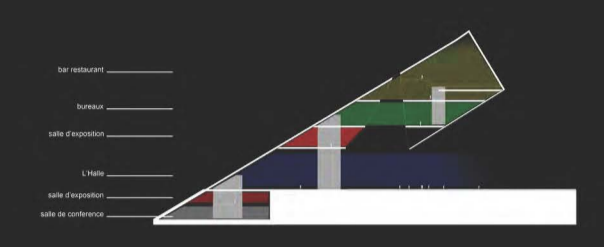
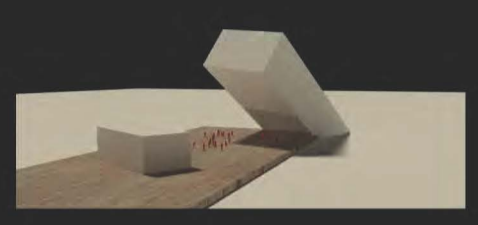
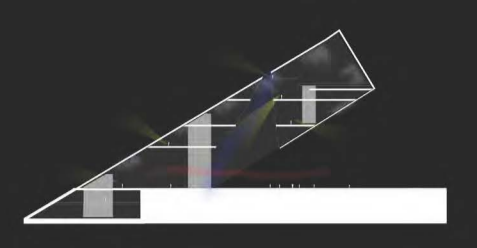
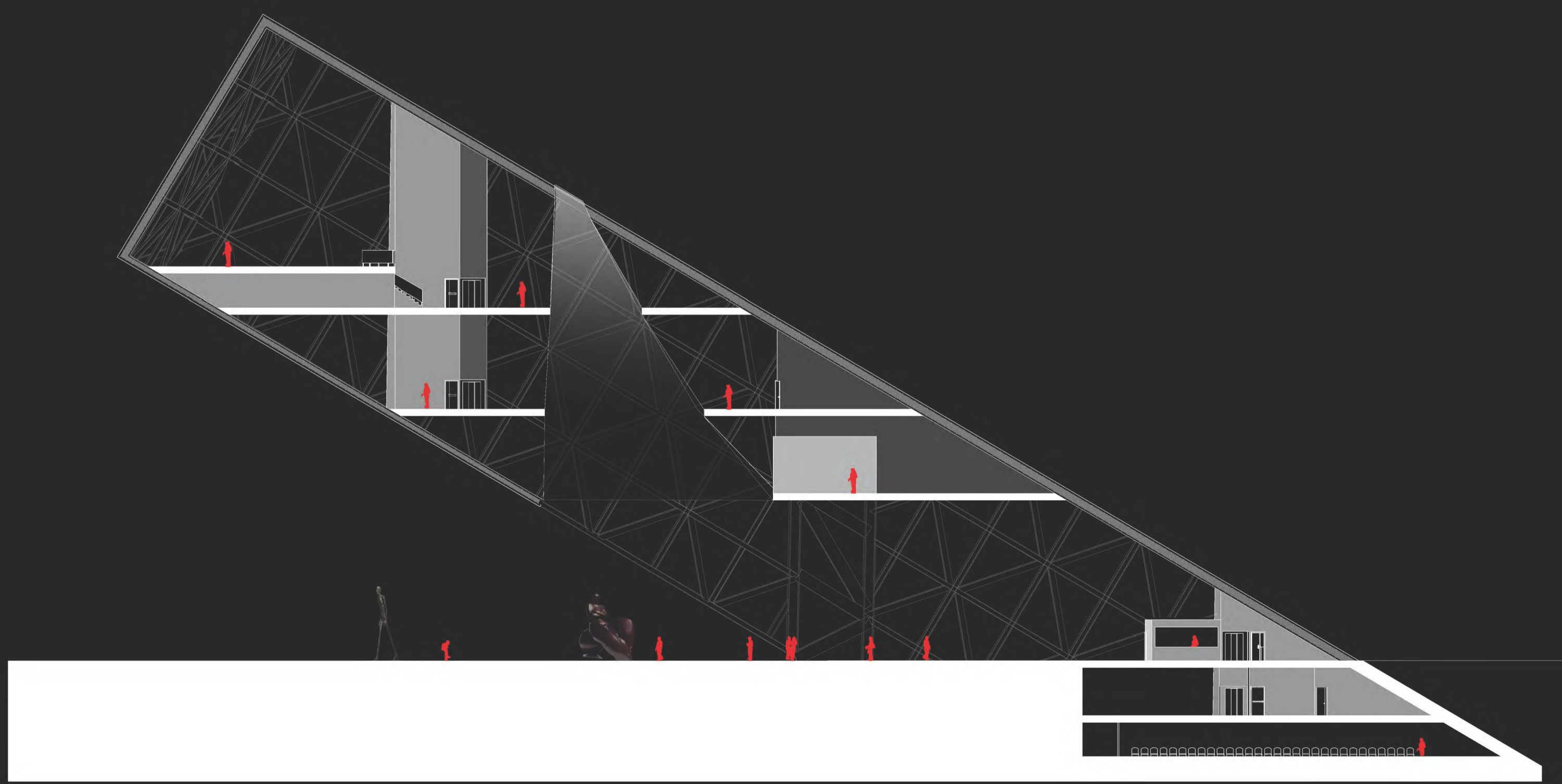
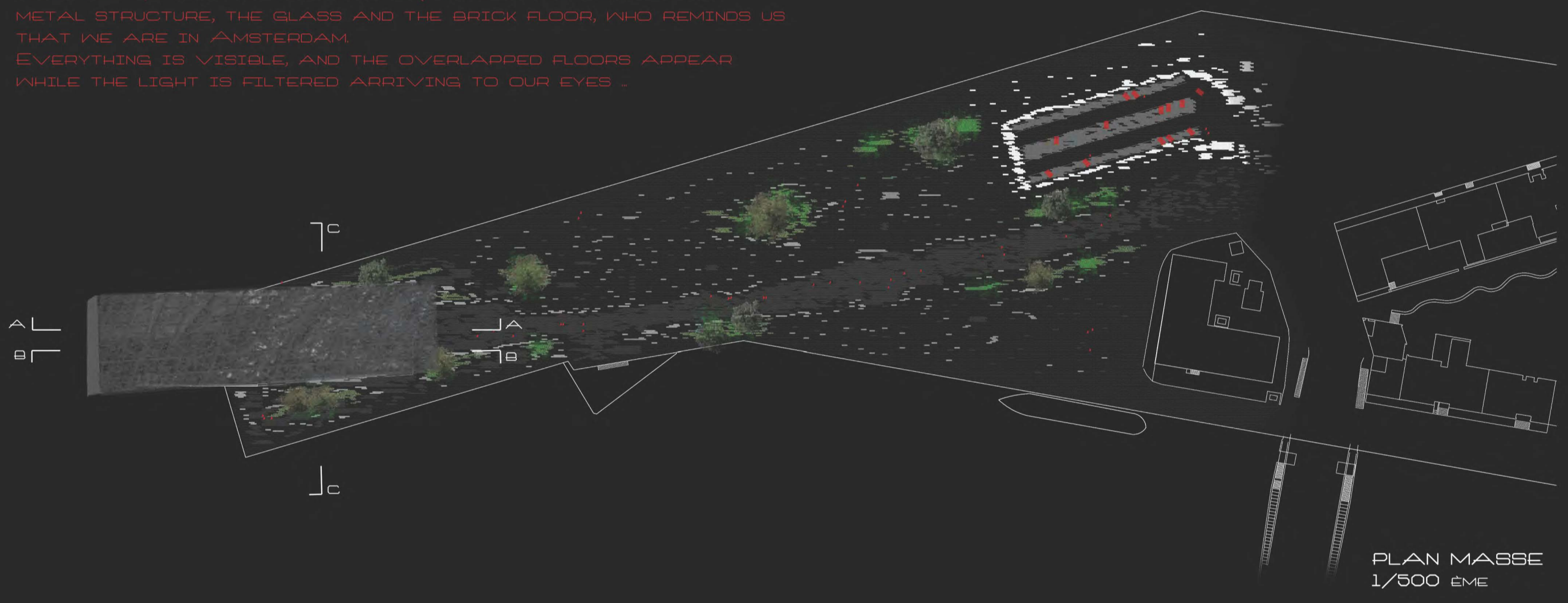


THE WRECK LIGHT

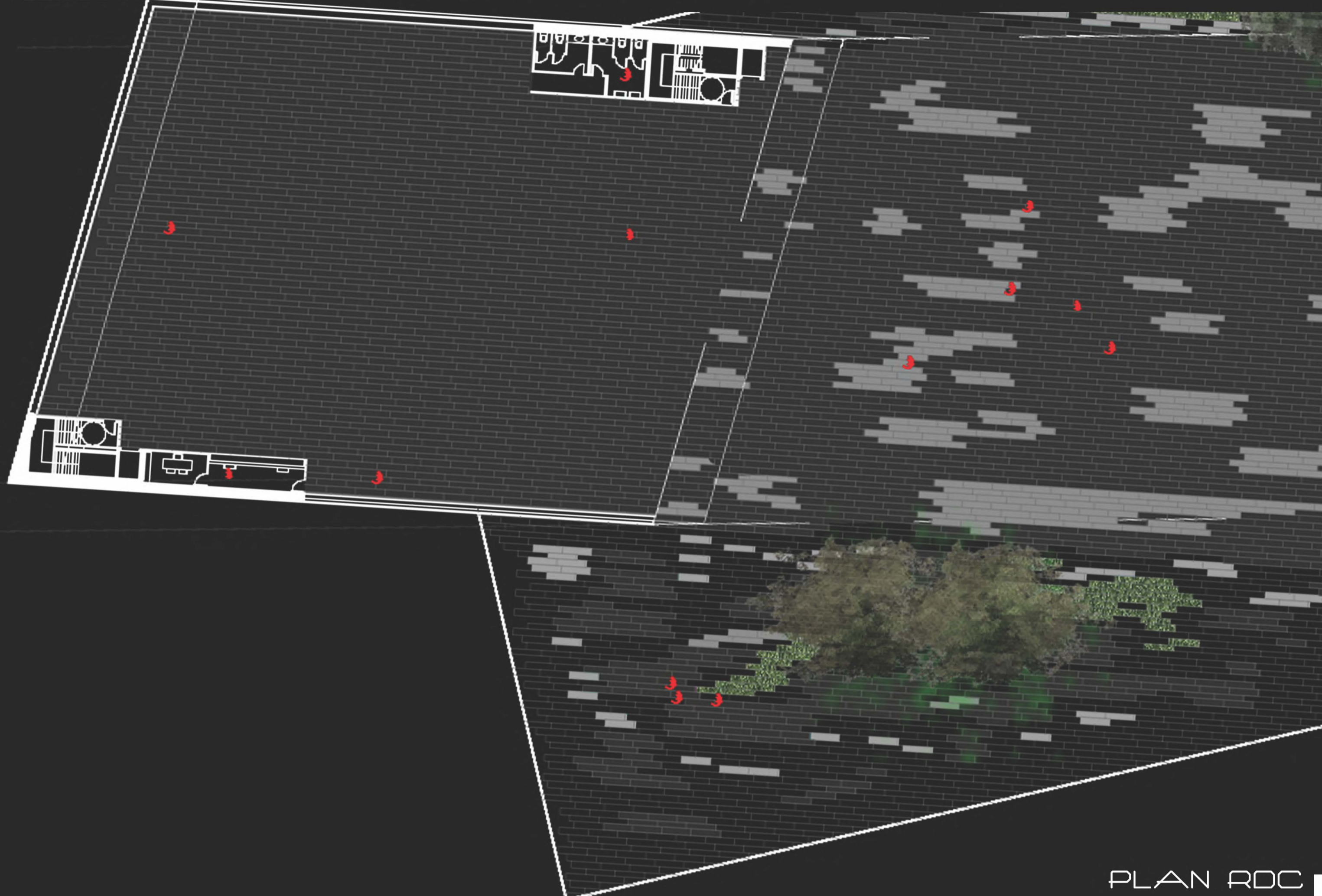
ÉCHOUÉE SUR LE FOND DE LA PRESQU'ÎLE DE JAVA ISLAND, UNE MASSE DE MÉTAL, L'ARCAM II. ELLE GIT ET S'ÉTEND DE TOUT SON LONG. POSÉE FÉBRILEMENT SUR LA TERRE, ELLE POINTE VERS LE CIEL ET ABRITE LE PASSAGER, ALORS QUE LE RESTE DE SON CORPS REPOSE DANS L'EAU. SON VOLUME IMPOSANT, FAIT ÉCHO AUX BÂTIMENTS DE LA RIVE GAUCHE, ET SA PLACE SUR LE TERRAIN CADRE ET STRUCTURE LA VUE SUR LE CENTRE VILLE. SEMBLANT TOTALEMENT FERMÉE EN JOURNÉE, LA NUIT LA LUMIÈRE S'EXFILTRÉ PAR SA PEAU D'ACIER PERFORÉE ET FAIT APPARAÎTRE UN BÂTI LÉGER ET PRESQUE TRANSPARENT. DANS SON ÉCHOUEMENT CONTRE LE RIVAGE, LE BLOC S'EST ÉVENTRÉ, LAISSANT UN TROU BÉANT EN SON CŒUR. QUAND ON ENTRE DANS L'ARCAM II, ON RETROUVE LE MÉTAL OMNIPRÉSENT DE LA STRUCTURE, LE VERRE ET L'APPARENCE DE LA BRIQUE AU SOL QUI NOUS RAPPEL QUE L'ON SE TROUVE À AMSTERDAM. TOUT EST VISIBLE, ET LES ÉTAGES SEMBLENT SE CHEVAUCHER TOUT EN LAISSANT FILTRER LE REGARD AU TRAVERS...



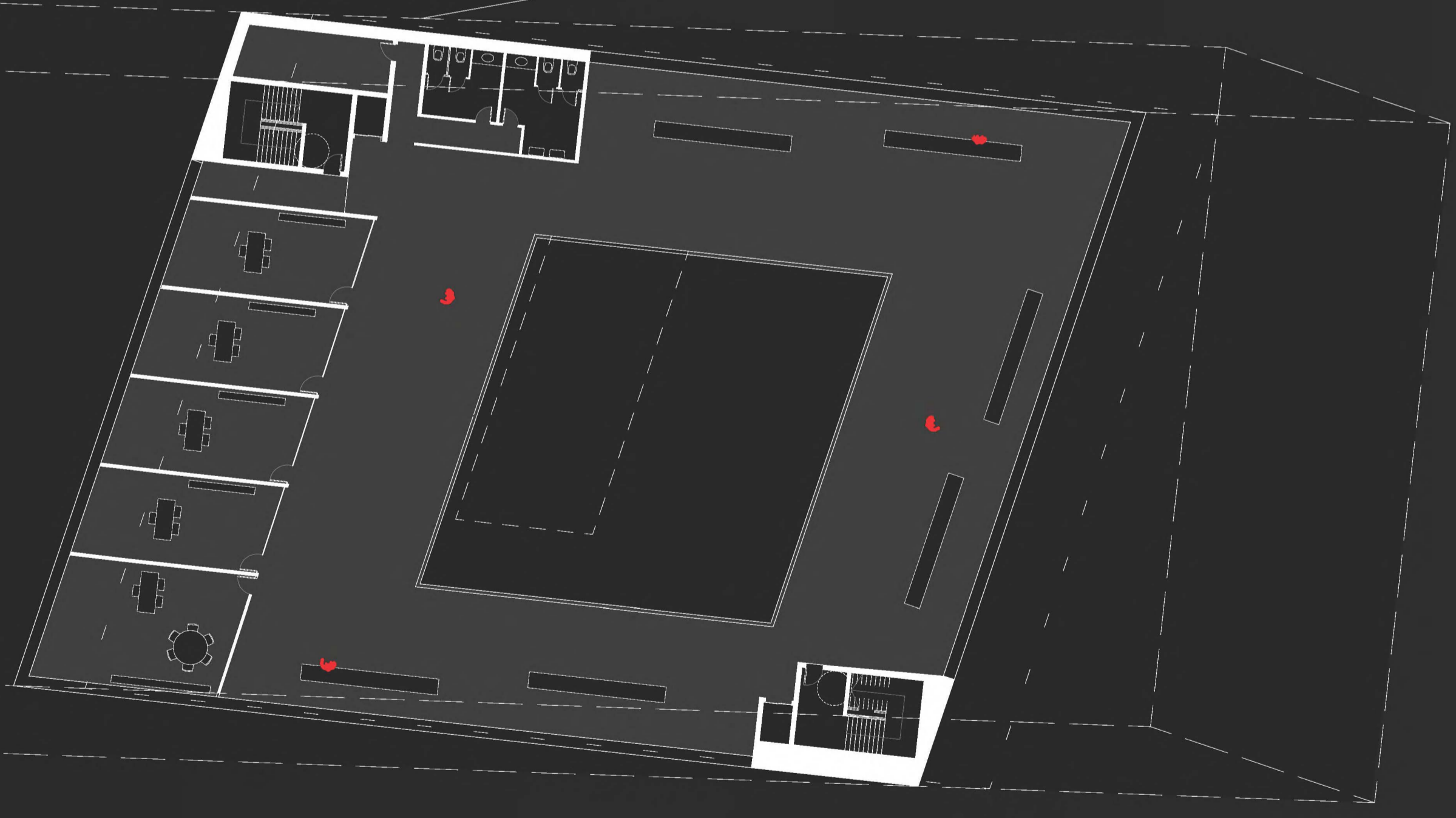
STRANDED ON THE BOTTOM OF JAVA ISLAND, A METAL MASS, THE ARCAM II. IT LIES AND EXTENDS THROUGHOUT ITS LENGTH. POSED FEVERISHLY ON EARTH, IT POINTS TO THE SKY AND COVER THE USERS, WHILE THE REST OF HIS BODY RESTS IN THE WATER. ITS IMPOSING SIZE, ECHOES THE BUILDINGS ON THE LEFT BANK, AND ITS PLACE ON THE ISLAND FRAME AND STRUCTURE THE VIEW OF THE CITY CENTER. IT SEEMS TO BE COMPLETELY CLOSED DURING THE DAY, HOWEVER NIGHT LIGHT EXFILTRATE ITS PERFORATED STEEL SKIN AND REVEALS THE LIGHTNESS AND TRANSPARENCY OF THE BUILDING. IN HIS STRANDING AGAINST THE SHORE, THE BLOCK WAS DISEMBOWELLED, LEAVING A GAPING HOLE IN HIS HEART. WHEN YOU GO INTO THE ARCAM II, WE FIND THE OMNIPRESENT METAL STRUCTURE, THE GLASS AND THE BRICK FLOOR, WHO REMINDS US THAT WE ARE IN AMSTERDAM. EVERYTHING IS VISIBLE, AND THE OVERLAPPED FLOORS APPEAR WHILE THE LIGHT IS FILTERED ARRIVING TO OUR EYES .



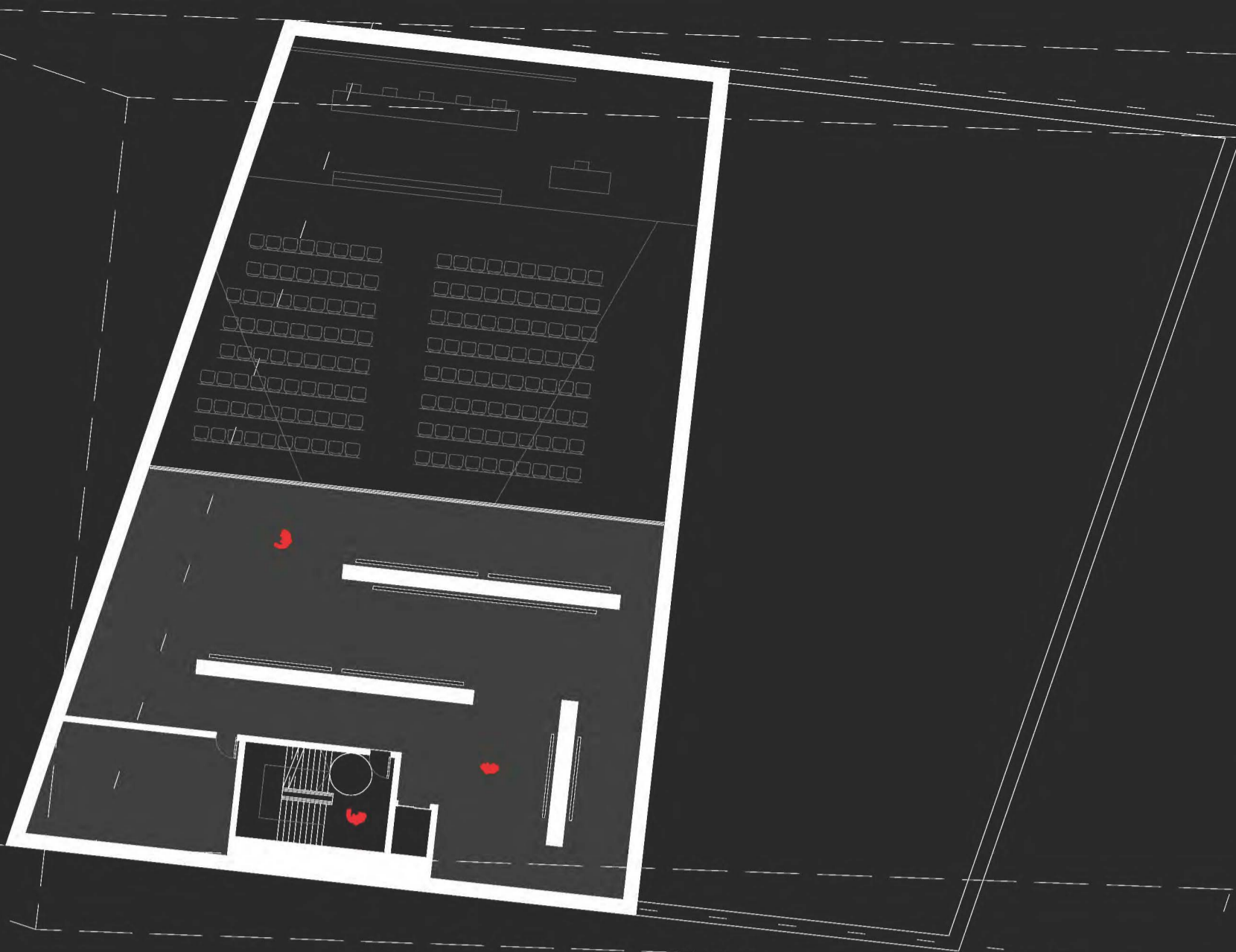
COUPE BB
1/200 ÈME



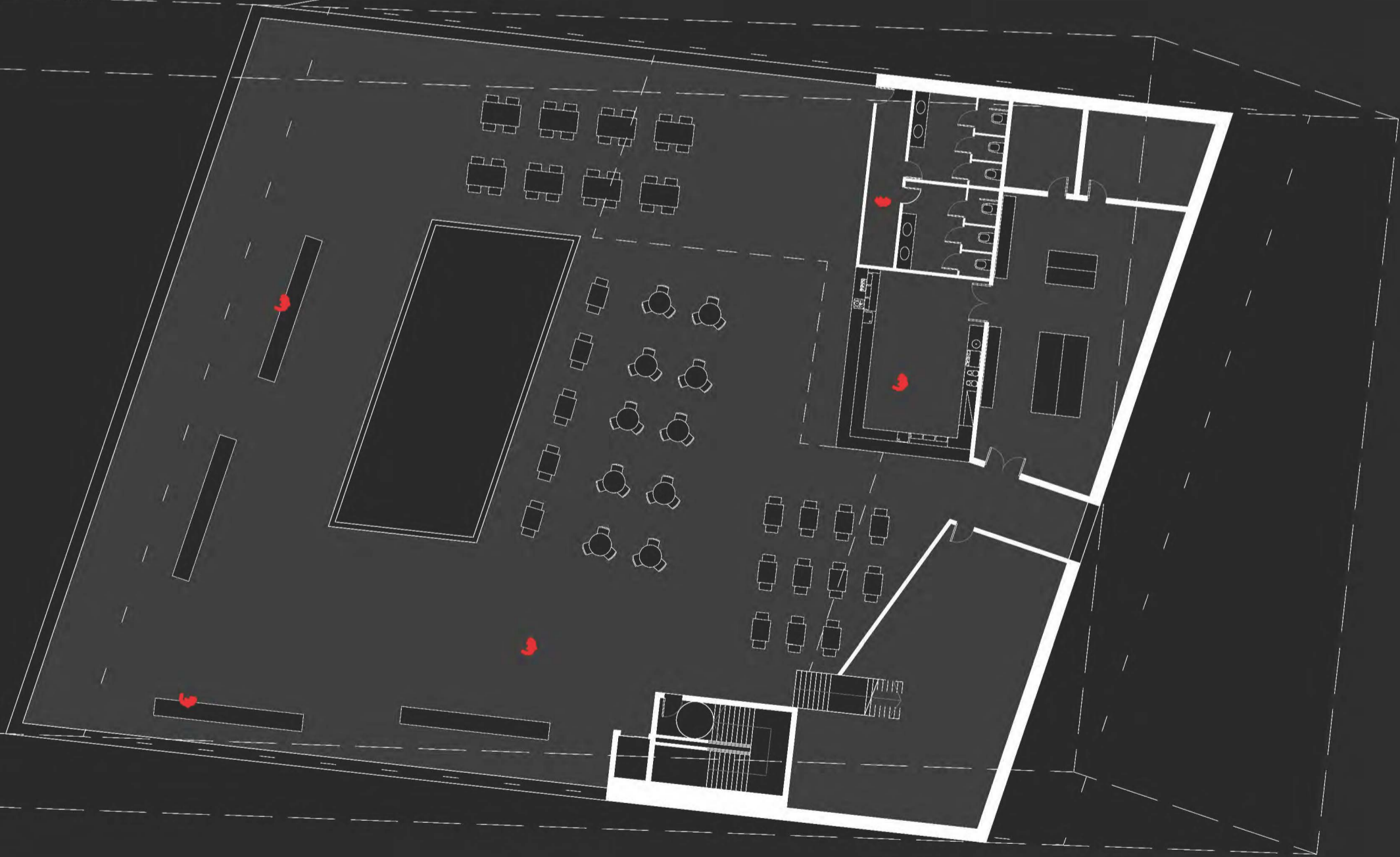
PLAN RDC | N
1/200 ÈME



PLAN R+2 | N
1/200 ÈME

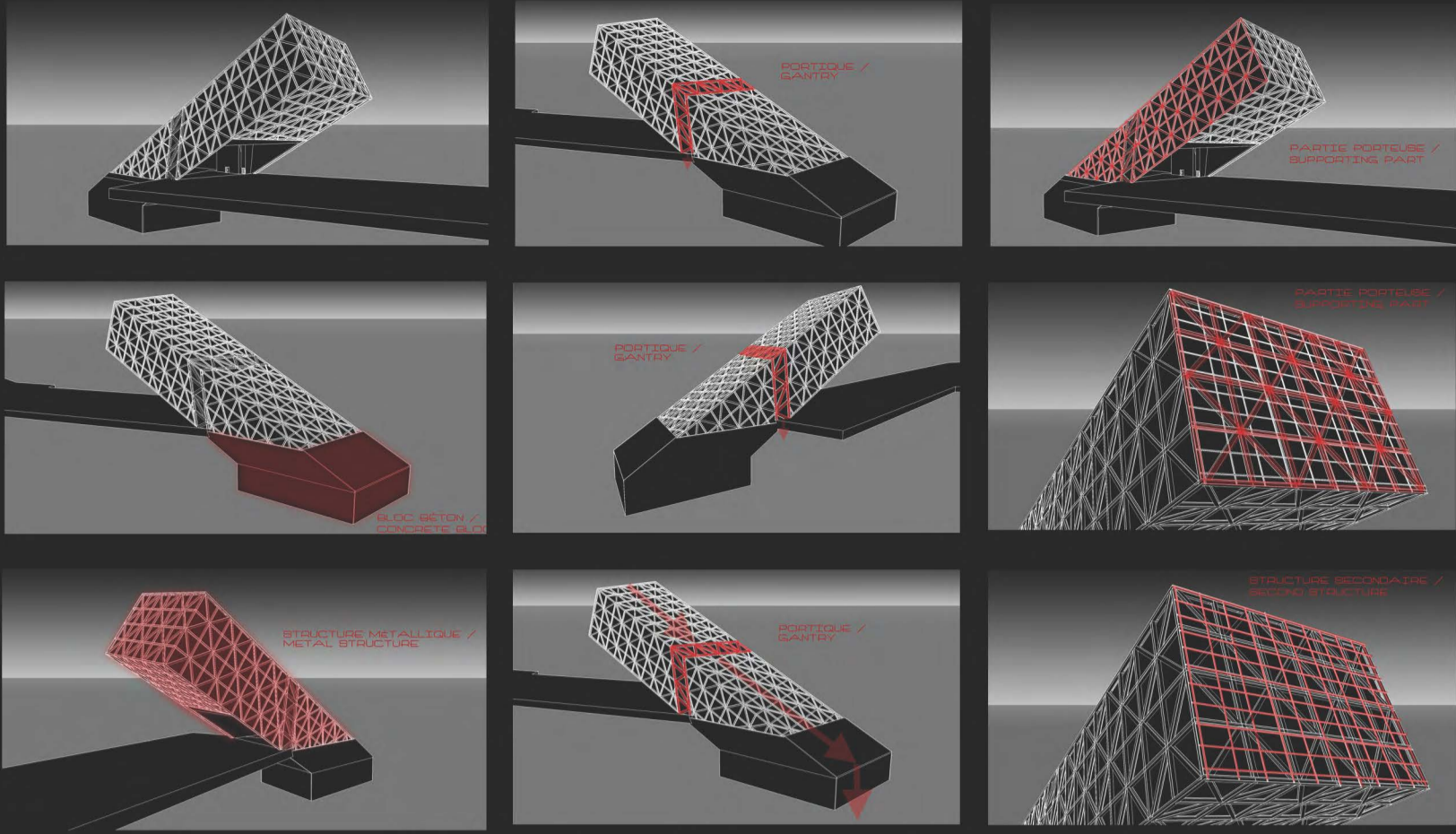


PLAN R-1 | N
1/200 ÈME

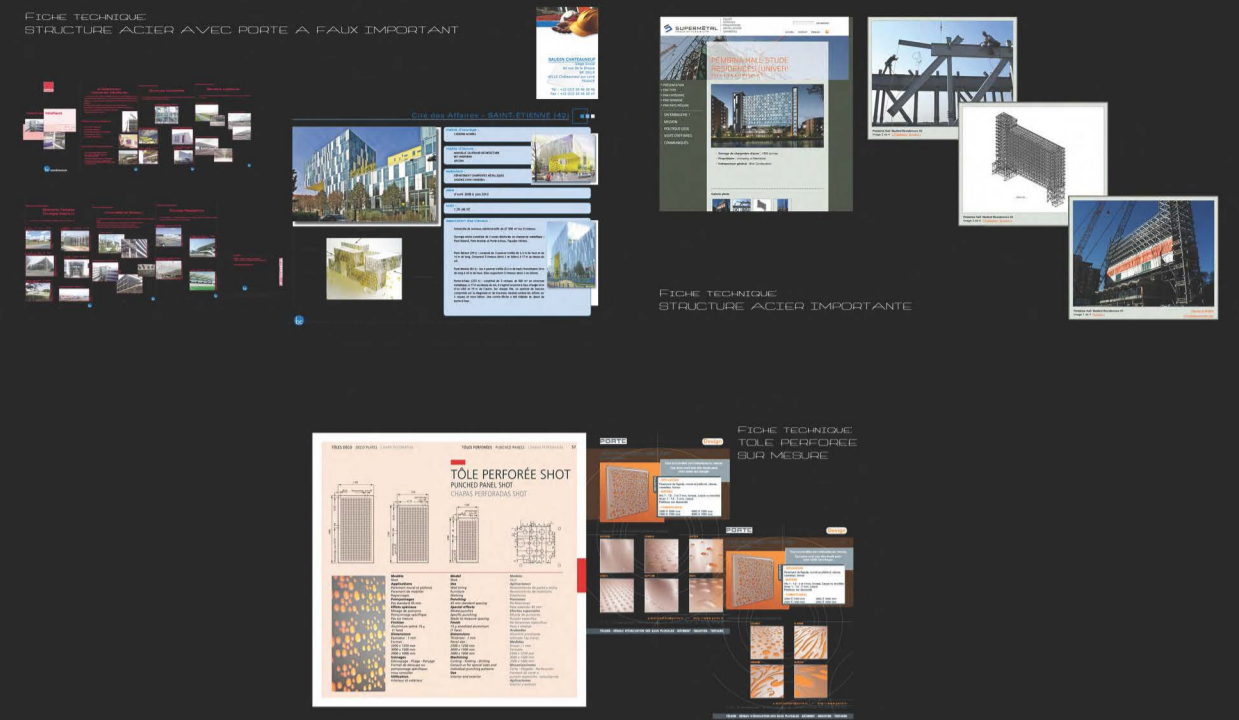


PLAN R+3 | N
1/200 ÈME

STRUCTURE // STRUCTURE



SCHÉMAS STRUCTURELS // STRUCTURAL SCHEMAS

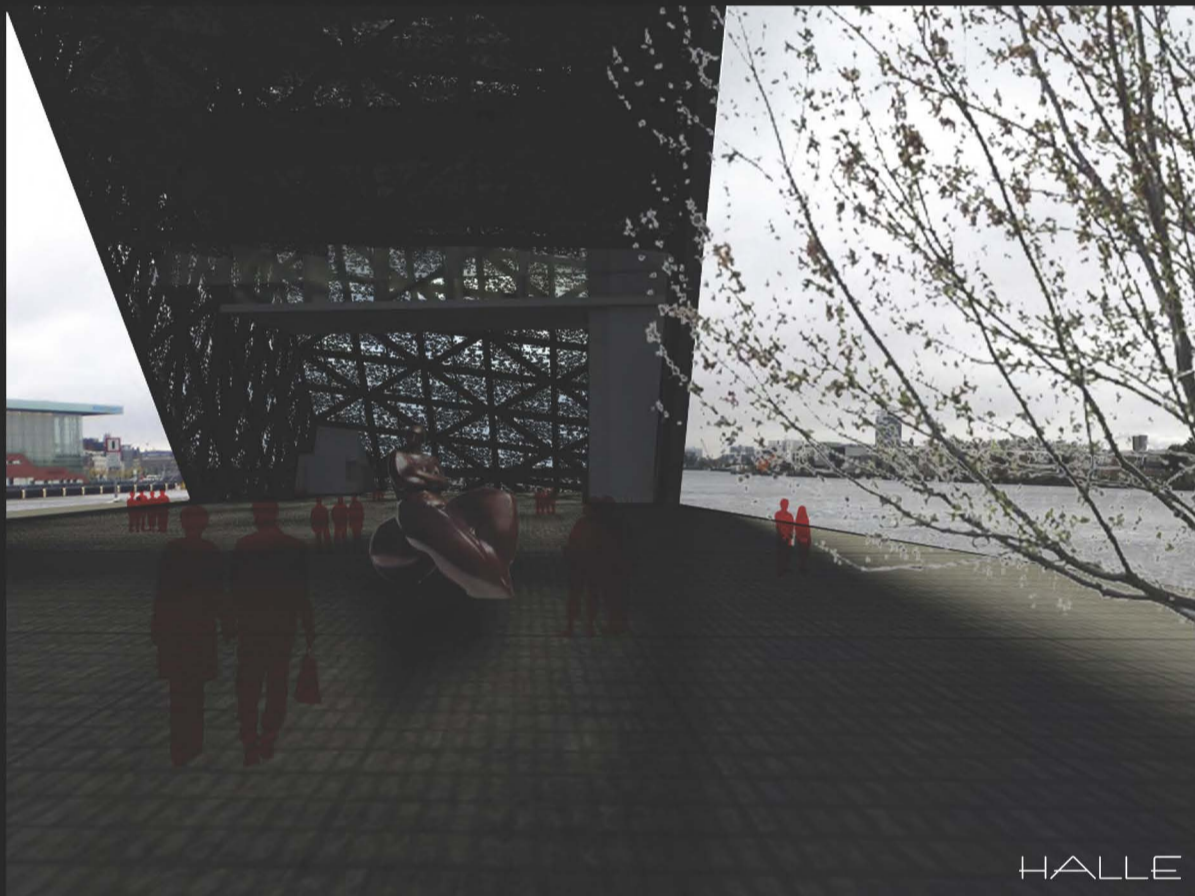


FICHES TECHNIQUES // DATASHEETS

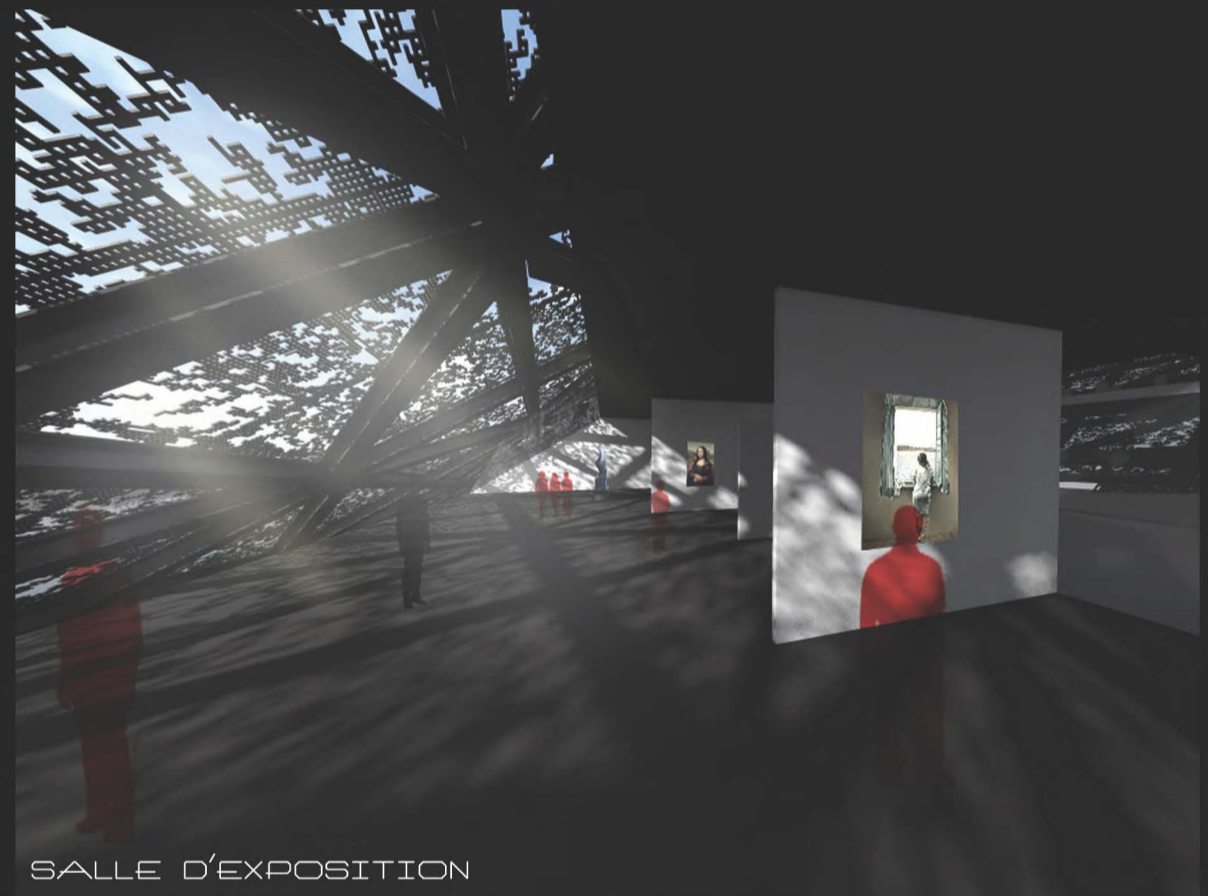


PLAQUES MÉTALIQUES // METAL PLATES

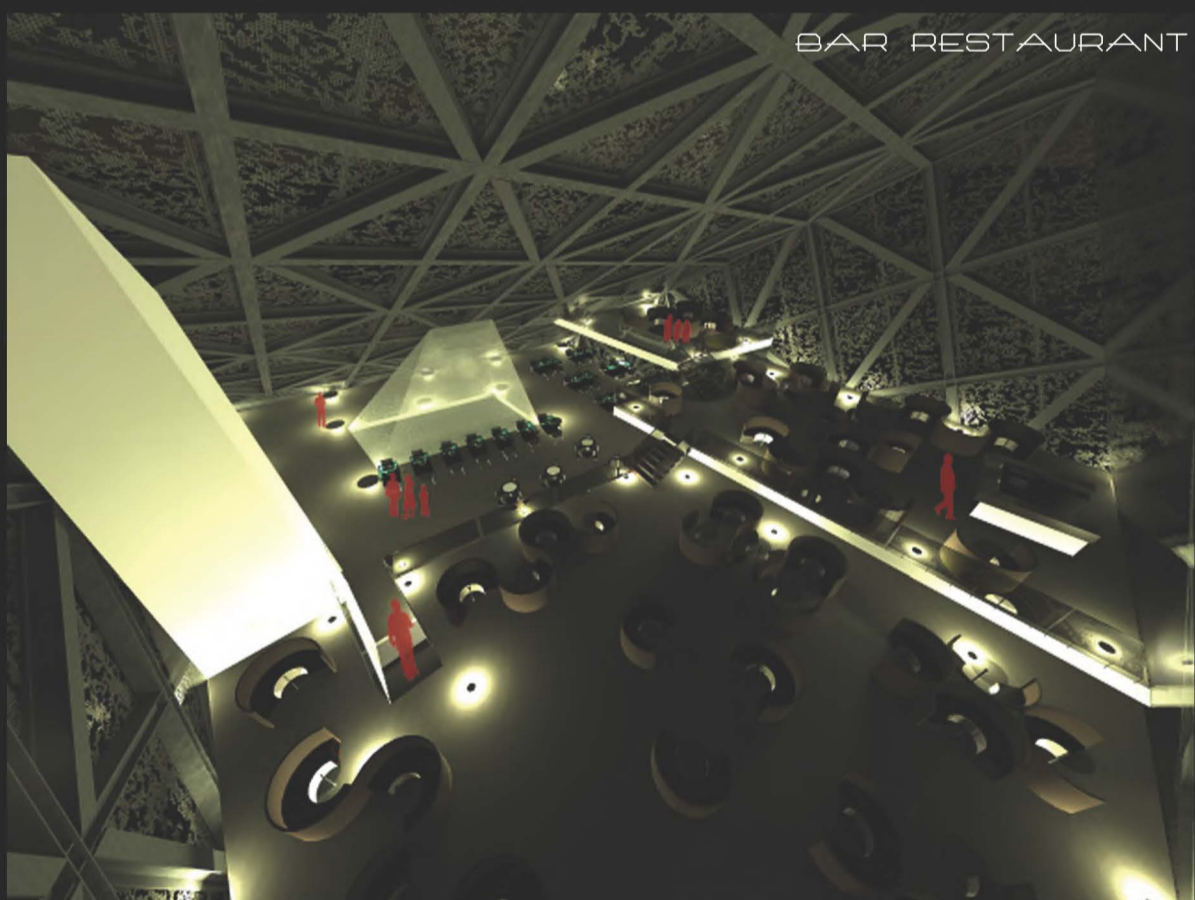
VUES // VIEWS



HALLE



SALLE D'EXPOSITION



BAR RESTAURANT



VUE D'ENSEMBLE (NUIT)



VUE D'ENSEMBLE (JOUR)